

QUALITY IN WHAT WE DO...

TOUCH CLEANING SOLUTIONS

ABN 88 61 35 01 429

50 Wentworth Road Burwood NSW 2134

touchcleaningsolutions@gmail.com

Phone: 0296398614



COMPANY
INTRODUCTION

TOUCH CLEANING SOLUTIONS



Our Strengths

- **Our People**-We manage and develop our people by providing them on-going support, direction, training and motivation.
- We focus on **QUALITY**, no shortcuts or cutting corners. We aim to do it right the first time
- Our proven **CAPABILITIES** - We have a proven ability to deliver on large and complex projects
- **Our Systems and Processes** which have been honed and fine tuned over time to deliver the most efficient outcome.

Touch Cleaning solutions has been operating since 2008, Each year we have continue to grow organically due to our main operating philosophies:

- Focus on solutions, not problems
- We are only as good as our last job - We are driven to deliver a quality of service that exceeds your expectations every time.
- We focus on earning a customer, the sale follows.
- Providing **VALUE** for our customers in terms of cost savings, time and a more efficient customer centric approach.
- Open and honest communication with our customers.

“

**RELIABILITY
THROUGH OUR
PROCESSES.
EXPERIENCE THE
DIFFERENCE
TODAY!**

”



WORK SAFETY



SAFETY IS OUR NUMBER ONE PRIORITY!

We do this By:

- Regular training through toolbox talks, Safe work procedures, hazard identification and reporting. Ensuring our people are trained to do the task in the safest most efficient manner.
- Ensuring SWMS ,MSDS are available and WHS policies are adhered to and also ensuring all our equipment are serviced and tested and tagged regularly.
- Training our staff to report hazards immediately
- Following colour coding and infectious control protocols
- Ensuring correct task specific PPE is being used





OUR COMMERCIAL SERVICES

Touch Cleaning Solutions is a one stop shop for all your cleaning needs. Our Commercial cleaning services include and not limited to:

• Spring cleans • Initial and exit cleans • function cleans • Window and façade cleaning (including low and high rise buildings) • Ad Hoc periodical cleaning • Carpet cleaning • Resilient floor deep cleaning • Provision of chemical supplies • Provision of bathroom paper and hygiene services • External areas and paths • Accommodation Cleaning • Touchpoint and fumigation Services for COVID19 return to work

We Service :

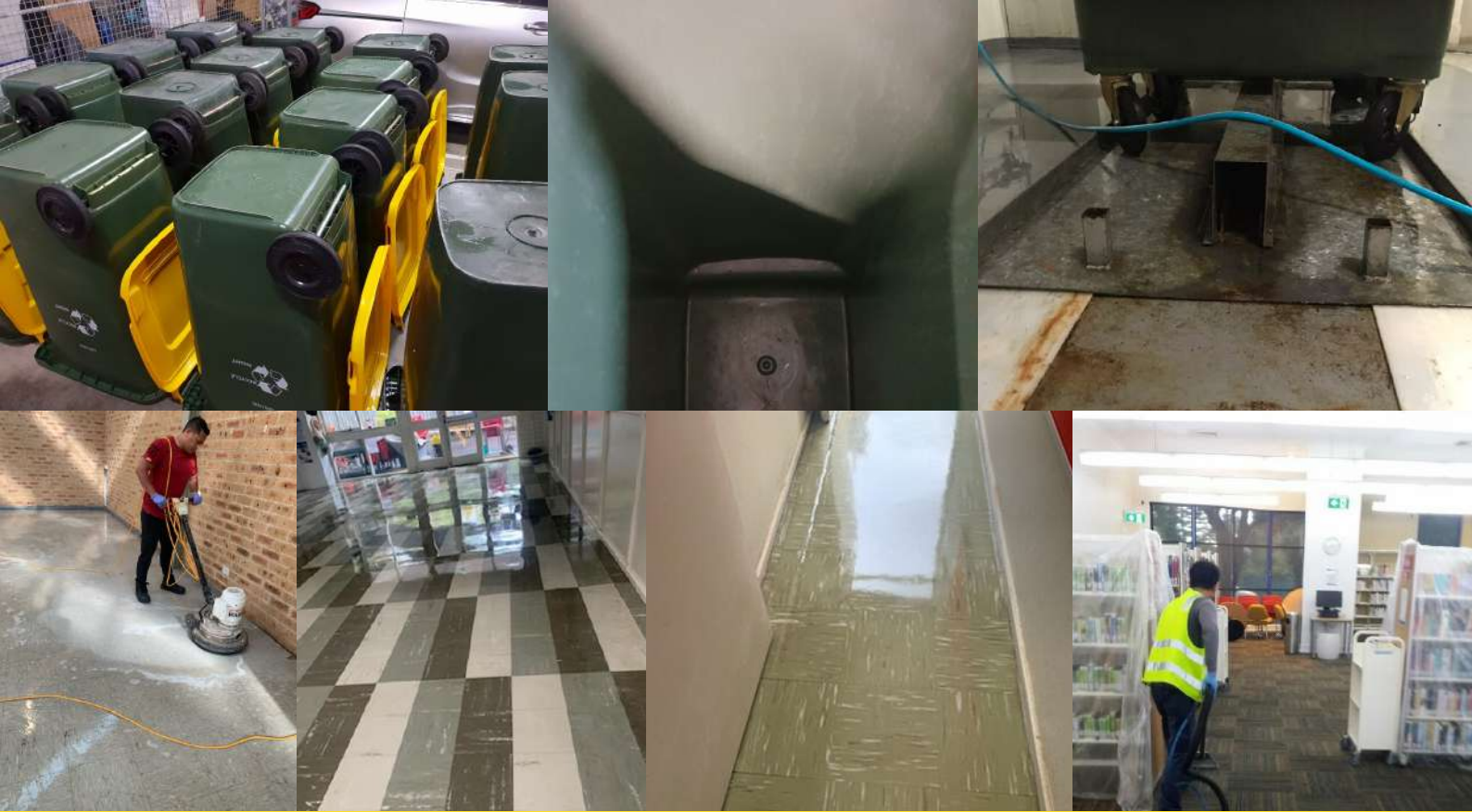
- Corporate Offices
- Strata Properties
- Hotels, clubs, restaurants etc
- Retail outlets and shopping centres
- Motels and serviced apartments
- Schools and Childcare Centres
- Industrial Sites

CLEANING FREQUENCIES
CAN BE ONE OFF, DAILY,
WEEKLY, FORTNIGHTLY OR
MONTHLY
FLEXIBLE SERVICE FREQUENCY

TCS have trained and licensed operators of the following equipment:

- Scissor Lift and boom lifts
- Abseiling
- High pressure cleaning
- Walk Behind and Ride on scrubbers
- Road sweepers

- OH&S compliant work practices
- Environmental Management System
- Insurances (Public Liability and Workers Compensation)



CONTACT US FOR FLEXIBLE
PROFESSIONAL CLEANING SOLUTIONS
TAILORED TO YOUR BUDGET AND
REQUIREMENTS





OUR CONSTRUCTION/BUILDERS CLEANING SERVICES

OUR SERVICE SPANS ACROSS COMMERCIAL, RESIDENTIAL,
INDUSTRIAL, RETAIL, HEALTH AND AGED CARE,
HOSPITALITY AND HOTELS, EDUCATION, SPORTING
FACILITIES, ENTERTAINMENT AND GOVERNMENT.

OUR EXPERTISE

- INITIAL AND FINAL BUILDERS CLEANING UNITS, TOWNHOUSES AND HOUSES
- RENOVATION/ REFURBISHMENT CLEANS
- BUILDERS SITE OFFICE, SITE SHED AND AMENITY CLEANING
- POST FITOUT CLEANS
- INDUSTRIAL CLEANS

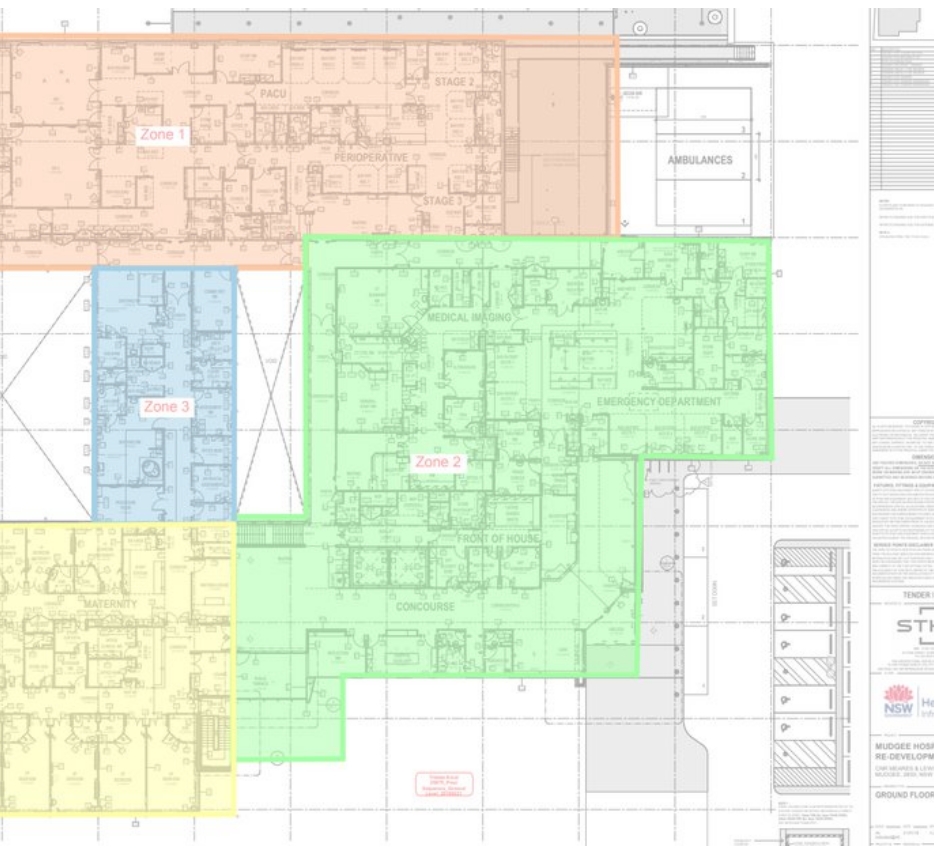
OUR PAST PROJECTS :

RESIDENTIAL - 35 UNITS IN CARLINGFORD, 8 UNITS IN MORTDALE, PROJECT HOMES IN SCHOFIELDS AND NORTH KELLYVILLE, CUSTOM HOMES IN CASTLE HILL, LUXURY HOMES IN PALM BEACH

FITOUT CLEANS - RETAIL SUPERSTORE IN BANKSTOWN, RESTAURANT IN KING STREET, RESTAURANT IN PARAMATTA, FRANCHISE HEALTH FOOD CHAIN 3 STORES- BLACKTOWN, STANHOPE GARDENS AND ROUSE HILL

HOSPITAL - MUDGEES HOSPITAL REDEVELOPMENT PROJECT

RECENT PROJECT/CASE STUDY



PROJECT : MUDGEE HOSPITAL REDEVELOPMENT PROJECT
CLIENT : HUTCHINSON BUILDERS
PROJECT DURATION; 6 WEEKS ON SITE
LOCATION : MUDGEE NSW (REGIONAL)
PROJECT CONSTRUCTION COST: 70 MILLION

Client Testimonial
 “Thank you Doris for such a great job we will be in touch for future projects”
Sam B - Project Manager



Scope of Works : Detailed final cleaning of the three level complex Hospital in stages to hand over to an impeccable standard.

Key Elements : Project involved a lot of pre planning during the height of the covid19 restrictions in March/April with regional travel restrictions in place as well as with other uncertainties to factor into on a short notice start date. Being a large challenging project with a tight handover deadline .

Execution : Execution was flawless due to the extensive planning with an on site working supervisor and cleaners staying on site throughout the duration of the project. Operations manager managing the project remotely with fortnightly visits with the support of the admin team. The project was a huge success due to the detailed planning, our people, systems and processes and open communication